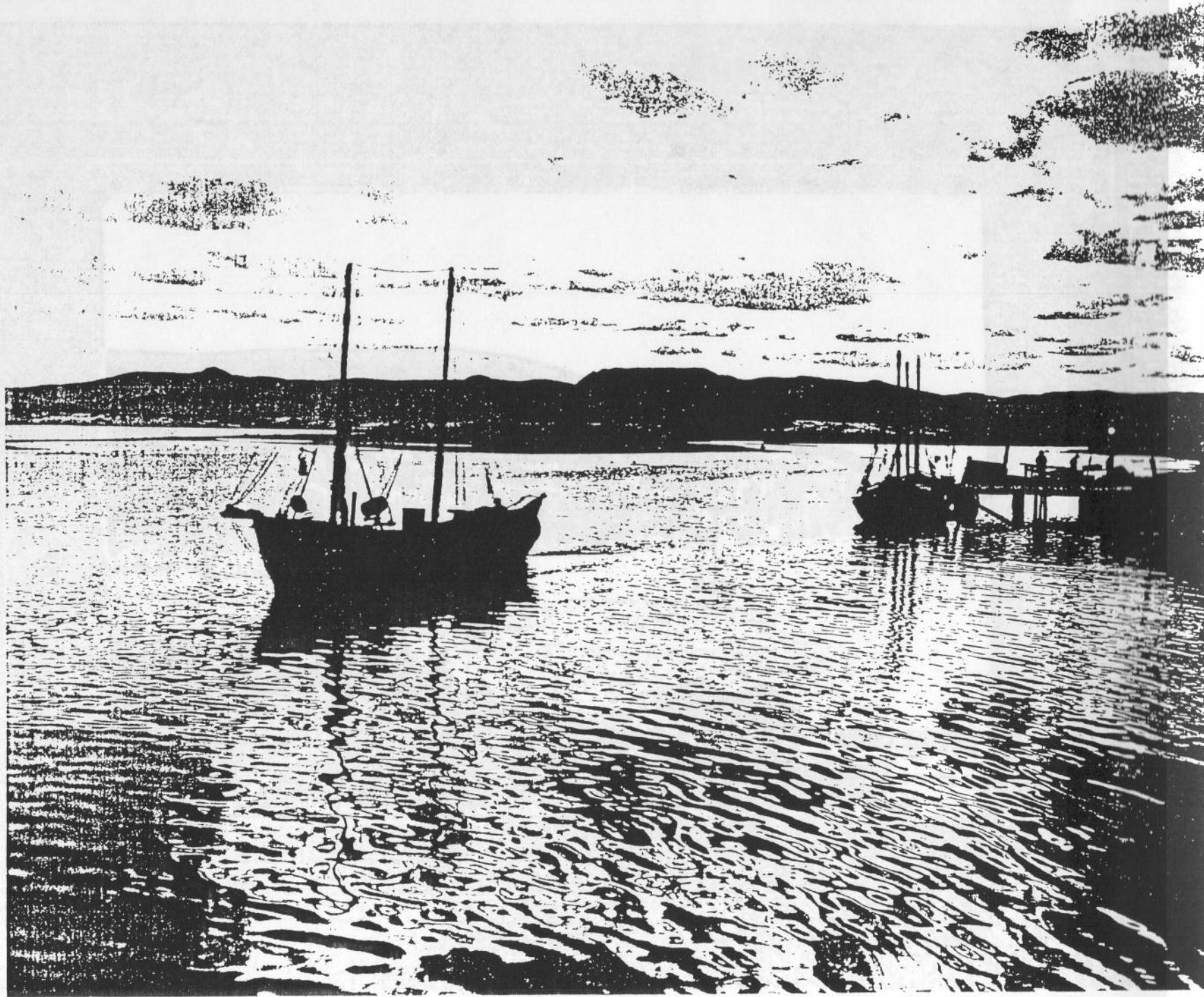
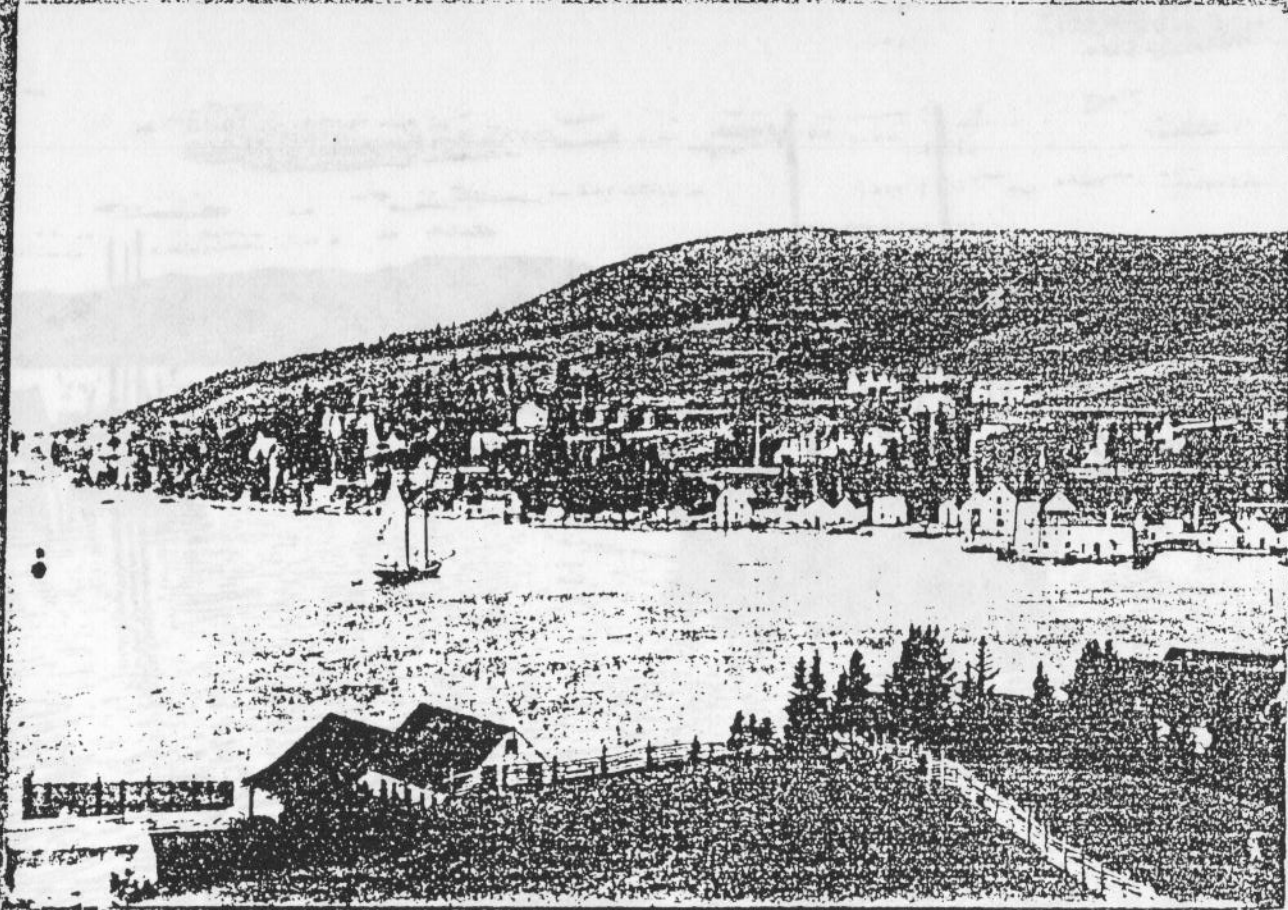


GASPÉ OF YESTERDAY - VOL.III

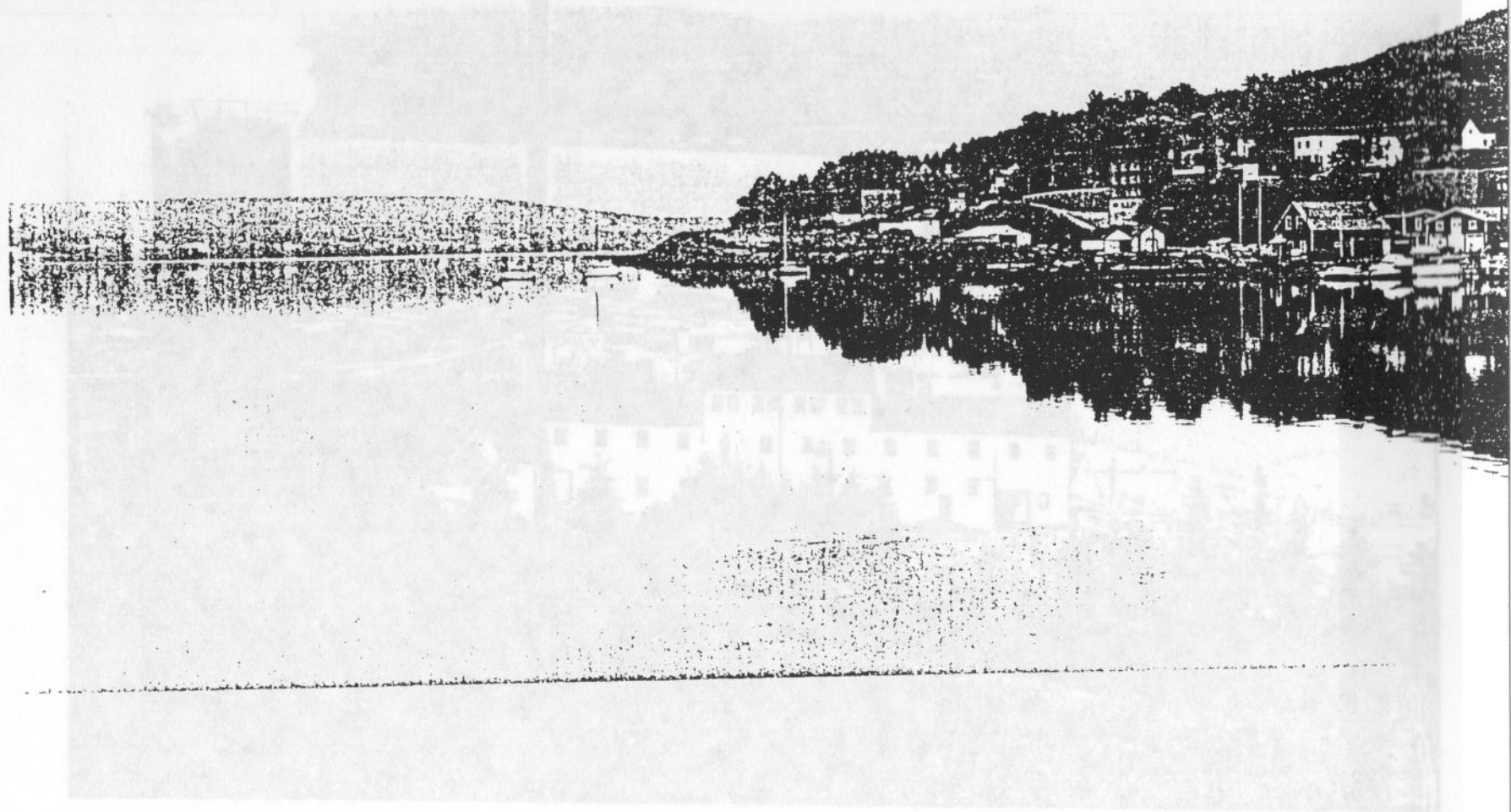
GASPÉ SCENES

- . TRADITIONAL FISHING BOATS
- . GASPÉ BASIN - DAYS OF SAIL
- . GASPÉ BASIN - CALM HAVEN
- . L'ANSE AUX COUSINS MILL
- . GRAND GRÈVE ON GASPE BAY
- . CAPE GASPÉ - LAND'S END
- . CAPE GASPÉ LIGHTHOUSE
- . CLIFFS OF THE FORILLON
- . CAPE DES ROSIERS LIGHTHOUSE
- . BARACHOIS BAR
- . PERCÉ IN WINTER
- . MAJESTIC PERCÉ ROCK
- . GASPESIAN SEABIRD COLONY
- . WINTER HAVEN
- . L'ANSE À BEAUFILS
- . PASPEBIAC BEACH
- . MIGUASHA POINT

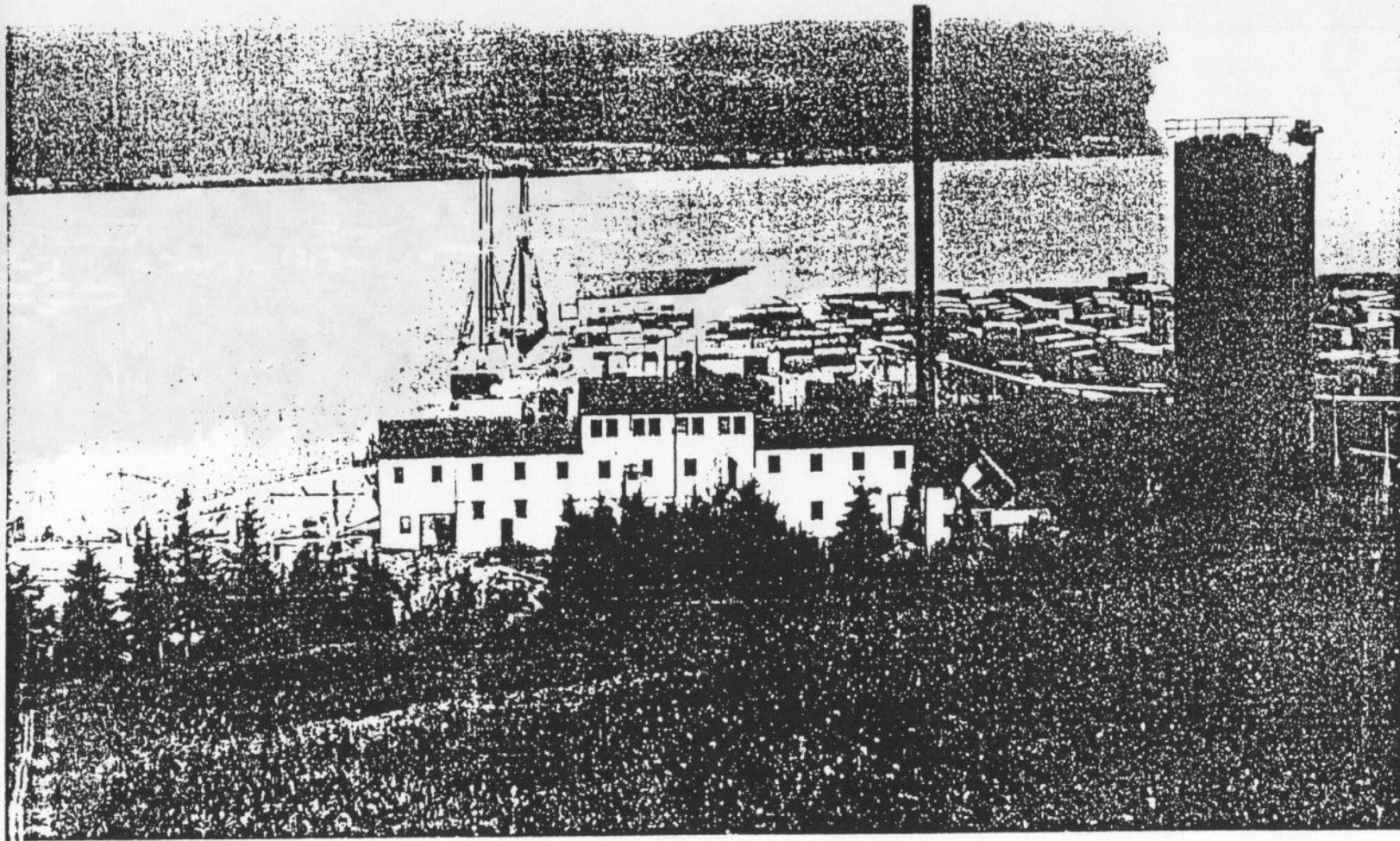




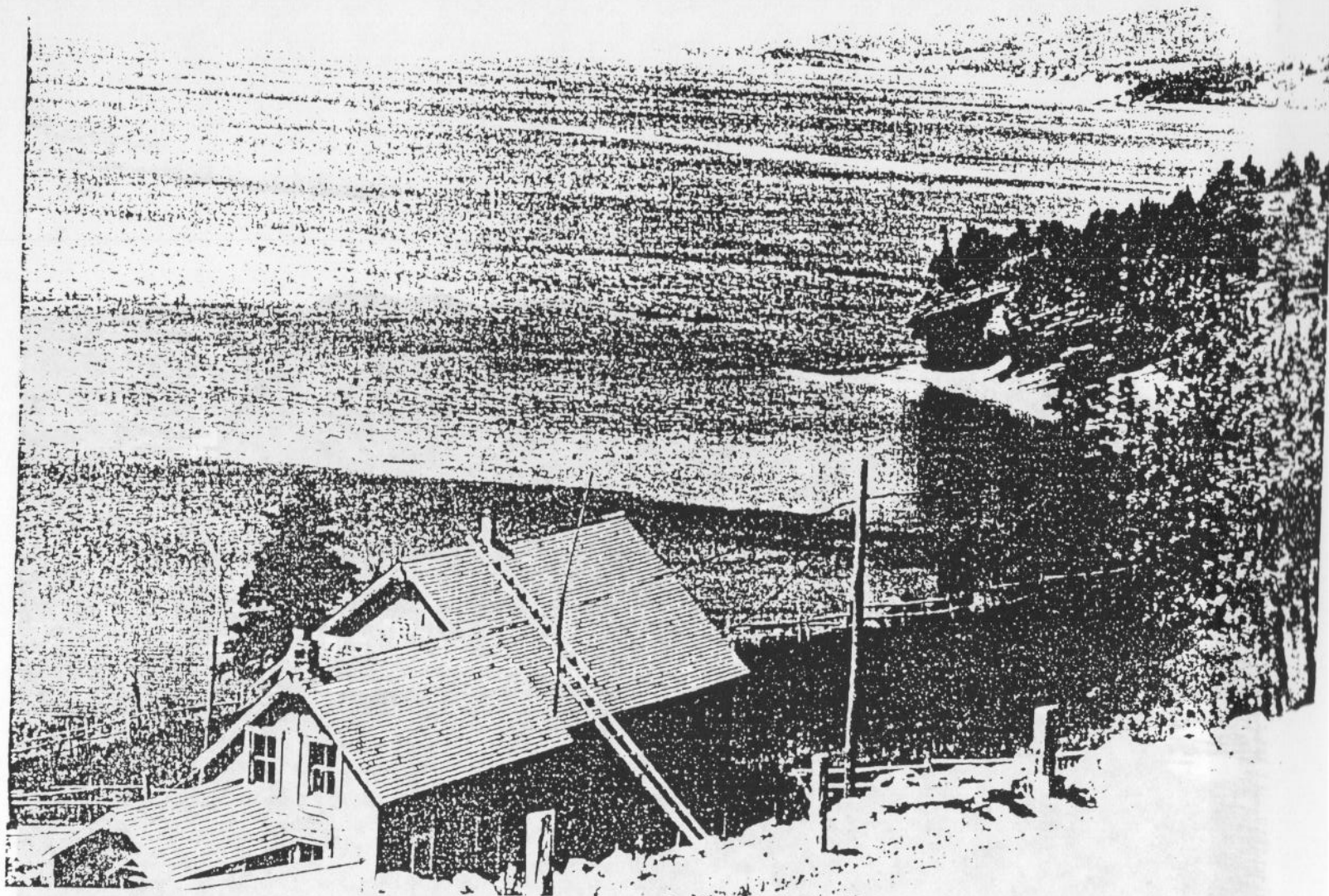
SHETLERD GATE PACH III THE DAYS OF HALL



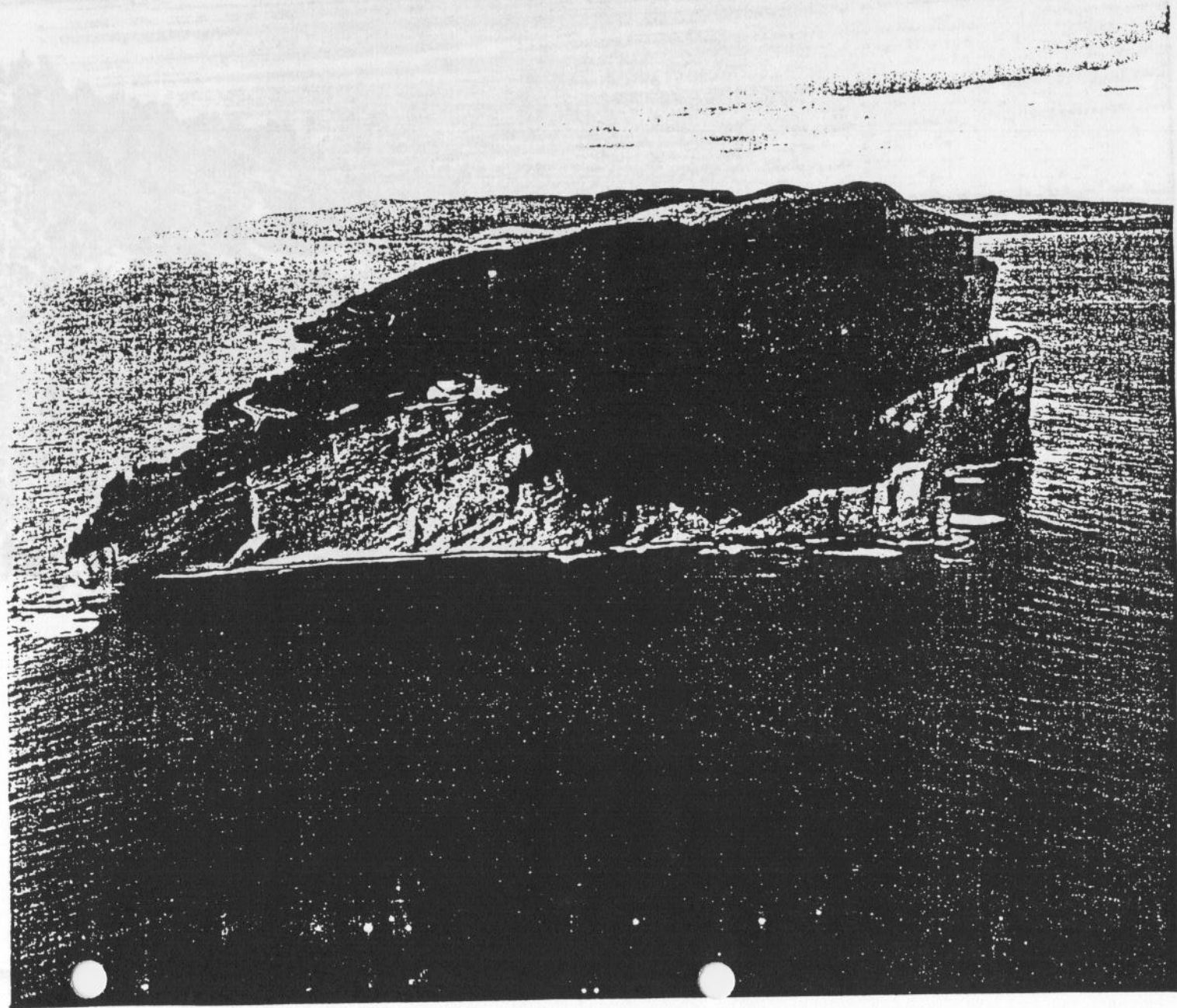
The Shepard and Moore family mill, Plain, Canada (1910s)



The Shephard and Morse lumber mill. Photo: Canadian National Rys.

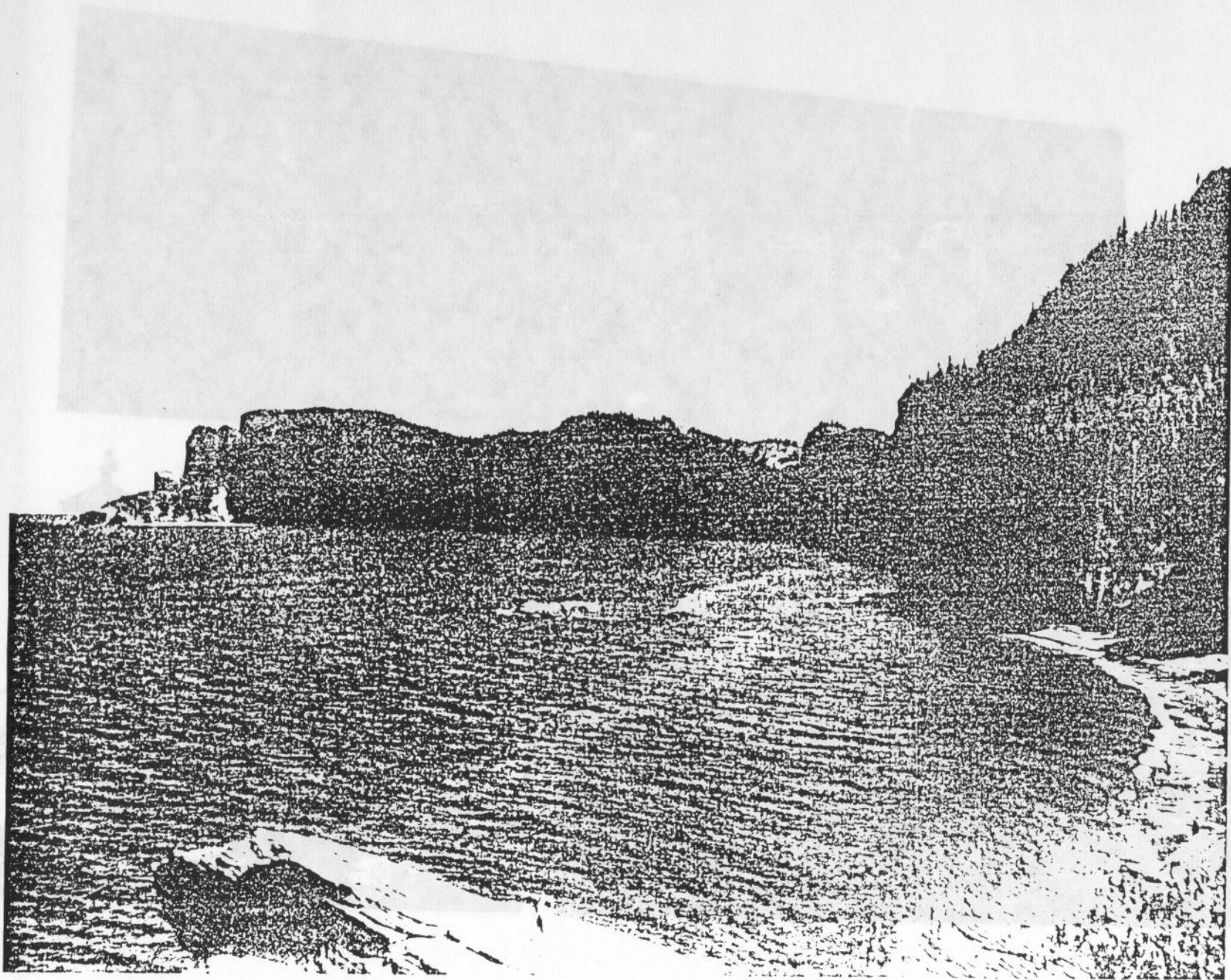


Grande-Greve and Gaspé Bay. Photo: Office du Film, Quebec



3-11-65 "STANDIG BIRD"

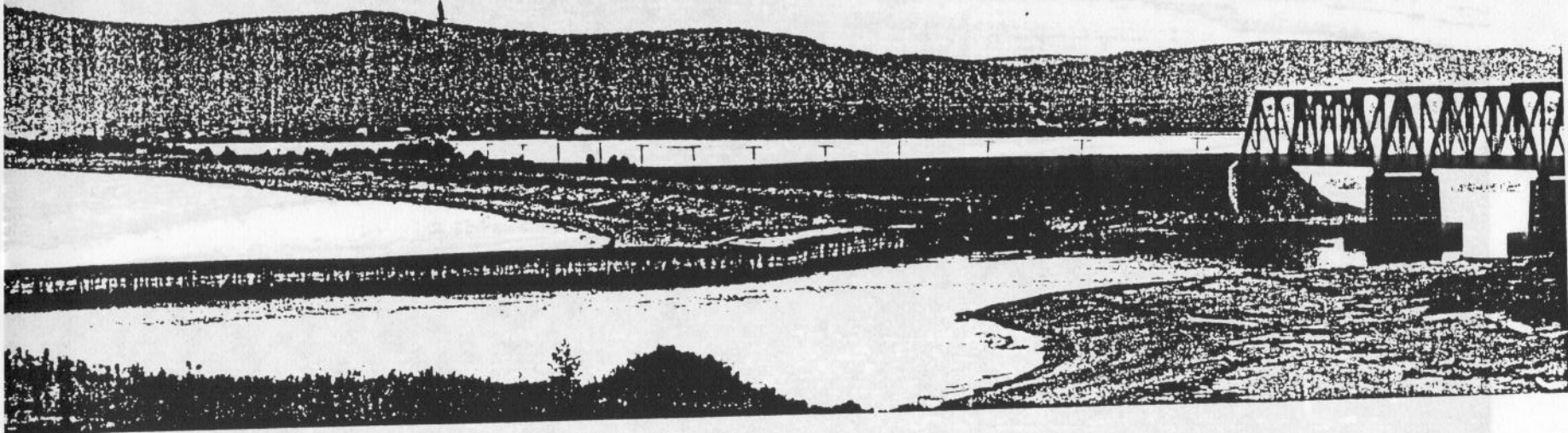




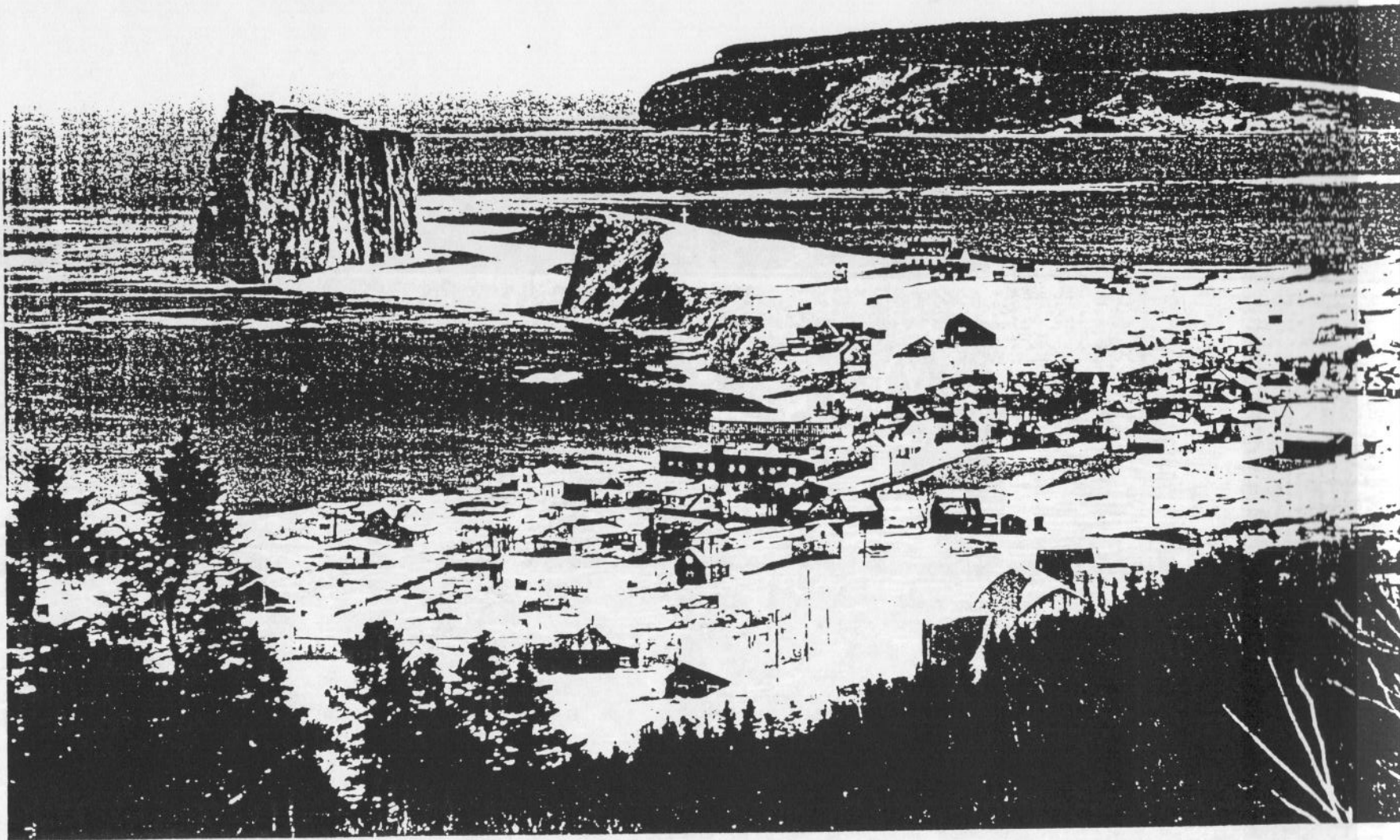
The cliffs of the Forillon Photo: Office de Québec



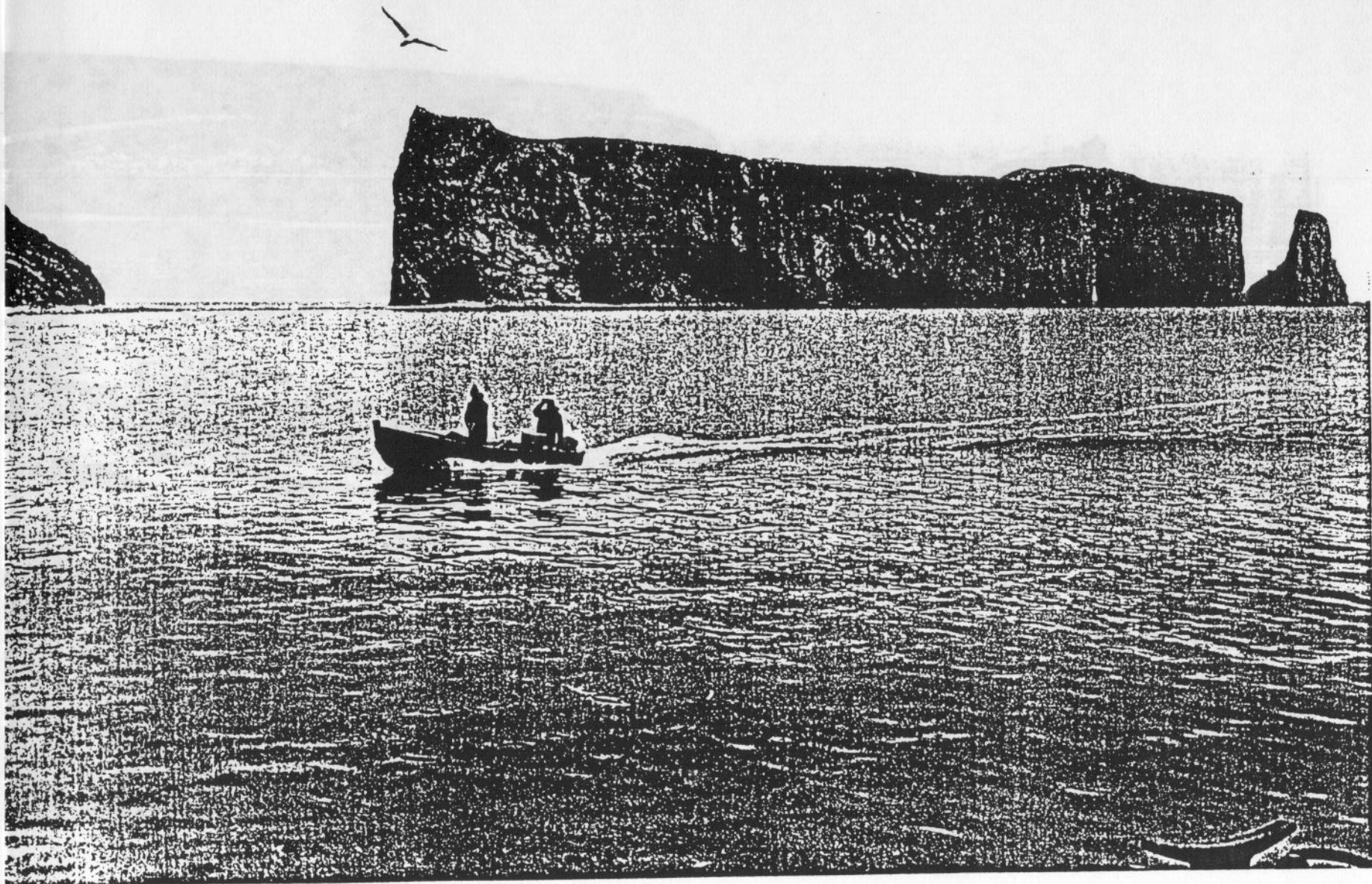
Cap des Rosiers Light Station. Photo: Office du Film, Quebec



Copied from the Light Station Photo Library of the Film Québec



PERCÉ IN WILSON - Éditeur officiel du Québec.



MAJESTIC PERCÉ ROCK - Éditeur officiel du Québec.

